

Touchscreen User Manual

**ZYTOUCH® Driver Software Version 1.0.4 (Serial)
(For Windows®)**



Patterson Street Blaydon Tyne & Wear
NE21 5SG United Kingdom

Tel: +44 (0)191 414 5511 Fax: +44 (0)191 414 0545
Web: www.zytronic.co.uk Email: info@zytronic.co.uk



1.0 INTRODUCTION	4
1.1 About This Manual	4
1.2 Shipping Damage	4
1.3 Care and Cleaning	4
1.4 Unpacking Your Touchscreen	4
1.5 The ZYTOUCH® Projected Capacitive Touchscreen	4
1.6 Variants of the ZYTOUCH® Projected Capacitive Touchscreen	5
1.7 ZYTOUCH® Projected Capacitive Driver Software	5
1.8 Software Compatibility	5
1.9 Before You Begin	6
1.10 Contacting Zytronic	6
 2.0 INSTALLING THE ZYTOUCH® PROJECTED CAPACITIVE TOUCHSCREEN	 7
2.1 Typical Mounting Guidelines	7
2.2 Integration Disclaimer	10
 3.0 INSTALLING THE ZYTOUCH® PROJECTED CAPACITIVE DRIVER SOFTWARE	 11
3.1 ZYTOUCH® Projected Capacitive Driver Software	11
3.2 Driver Software Installation	11
3.2.1 Driver Software Installation Notes for Windows 2000 Users Only	14
3.2.2 Driver Software Installation Notes for Windows 2000 and Windows XP Users	15
3.3 Connecting the ZYTOUCH® Projected Capacitive Touchscreen to the Host Computer	15
3.3.1 Important Connectivity Notes for Windows NT Users	16
 4.0 CONFIGURING THE ZYTOUCH® PROJECTED CAPACITIVE DRIVER SOFTWARE AND TOUCHSCREEN	 17
4.1 Launching the Touchscreen Control Panel	17
4.2 Contact Page	17
4.3 Connection Page	18
4.3.1 Connection Page – Advanced	19
4.4 Sensitivity Page	20
4.4.1 Setting the Sensitivity and Activation Threshold of the Touchscreen	21
4.5 Calibration Page	22
4.5.1 Launching of the Stand Alone Calibration Routine using the Calibration.exe Icon	24
4.6 Mouse Page	24
4.6.1 Double-Click Emulation	25
4.6.2 Right-Click Emulation	26
4.7 Graph Page	27
4.7.1 Testing the Touchscreen Integrity	27
4.7.2 Signal-to-Noise Check	27
4.8 Monitor Page	28
4.8.1 Monitor Page – Advanced	28
4.9 Edge Gain Page	29
4.10 Help Page	30

4.11	Saving the Control Panel Settings	30
4.12	Storage of the Saved Touchscreen Control Panel Configuration Settings	31
4.13	ZYTOUCH® Hot Keys	32
4.14	Process to Uninstall the ZYTOUCH® Projected Capacitive Touchscreen Driver	33
5.0	TROUBLESHOOTING	34
5.1	Common Problems and Recommended Solutions	34
6.0	ZYTOUCH® PROJECTED CAPACITIVE TECHNICAL SPECIFICATION (SERIAL)	37
7.0	APPENDIX A: SERIAL D9 CONNECTOR WIRING DIAGRAM	38



1.0 INTRODUCTION

1.1 About This Manual

This manual provides all of the information you need to install and use the ZYTOUCH® Projected Capacitive Touchscreen. The manual is organised as follows:

- Installation of the ZYTOUCH® Projected Capacitive Touchscreen.
- Installation of the ZYTOUCH® Projected Capacitive Driver Software.
- Configuring the ZYTOUCH® Projected Capacitive Driver Software and Touchscreen.
- Troubleshooting.
- ZYTOUCH® Projected Capacitive Technical Specification (Serial).

1.2 Shipping Damage

On receipt of your ZYTOUCH® Projected Capacitive Product, if you notice damage to the shipping carton, or concealed damage, be sure to save all packing materials for later inspection by the carrier, who is responsible for any shipping damage.

If failure occurs during the warranty period of the product, please contact the point of sale where the product was purchased from.

1.3 Care and Cleaning

Handle the touchscreen with care prior and during installation. Do not pull or stress cables and ensure not to damage the touchscreen prior to installation. Clean the touchscreen surfaces with an alcohol free glass cleaner and soft cloth. Ensure that the surfaces are clean and dry before integration of the touchscreen.

1.4 Unpacking Your Touchscreen

Ensure that the following items are present and in good condition:

- ZYTOUCH® Projected Capacitive Touchscreen(s)

Users can download the latest ZYTOUCH® Projected Capacitive Software and User Manual directly from the Zytronic website (<http://www.zytronic.co.uk/downloads.htm>).

1.5 The ZYTOUCH® Projected Capacitive Touchscreen

The ZYTOUCH® Projected Capacitive touchscreen is based on Projected Capacitive technology which enables the device to sense through a protective screen in front of the display. The on board electronics effectively divide the screen into sensing cells using micro fine wires which are embedded into a glass laminate construction. These wires are connected to the on board electronic controller circuitry, and an oscillation frequency is established for each wire. Touching the glass causes a change in frequency of the wires at that particular point, the position of which is calculated and identified by the controller and accompanying host Driver software. Unlike other capacitive systems where the operator touches the actual conducting surface of the sensing panel, the active component of the ZYTOUCH® Projected Capacitive touchscreen is embedded within the glass laminate construction ensuring long product life and stability.

The touchscreen can be supplied with options of anti-glare or anti-reflection coatings, thermal toughening or chemical strengthening and privacy or contrast enhancement filters. The front glass of the touchscreen acts as a dielectric and enhances the capacitance of the touchscreen.

The ZYTOUCH® Projected Capacitive touchscreen is durable and dependable; its construction protecting against damage caused by moisture, heat, and vandalism.

1.6 Variants of the ZYTOUCH® Projected Capacitive Touchscreen

The ZYTOUCH® Projected Capacitive (Serial) product is available in two variants depending upon the application requirement. These two variants are:

- ***Direct Touch Application*** – used for standard applications where an applied touch makes direct contact with the front surface of the touchscreen.
- ***Through Touch Application*** – used for through touch applications where the touchscreen is placed behind a separate front piece of sacrificial glass or polycarbonate.

The above two variants are independent of each other and need to be requested during the initial purchasing of the product. Both of the above variants are powered from the host computer via the Serial RS232 DTR and RTS lines, therefore no external power supply is required. The wiring diagram for the serial D9 connector used is illustrated in Appendix A. Voltages between 6V and 12V are acceptable to power the touchscreen.

1.7 ZYTOUCH® Projected Capacitive Driver Software

The ZYTOUCH® Projected Capacitive touchscreen is connected to a host computer via a Serial lead. The ZYTOUCH® Projected Capacitive Driver software allows the touchscreen to interface with the host computer's operating system by emulating the behaviour of a computer "mouse" and translates applied touches on the touchscreen surface into mouse movement. The type of mouse movement functionality can be set within the ZYTOUCH® Projected Capacitive Driver software.

1.8 Software Compatibility

The ZYTOUCH® Projected Capacitive Driver Software Version 1.0.4 (Serial) is compatible with the following Microsoft Operating Systems:

- Microsoft® Windows® 98SE. (Will operate but no longer supported)
- Microsoft® Windows® Me. (Will operate but no longer supported)
- Microsoft® Windows® NT4.0. (Will operate but no longer supported)
- Microsoft® Windows® 2000 (Service Pack 3 and above).
- Microsoft® Windows® XP (Home and Professional editions).
- Microsoft® Windows® XP (Embedded).

1.9 Before You Begin

Before proceeding with the touchscreen installation ensure the following:

- Your Windows operating system is correctly installed and operating with your mouse.
- Ensure that no **Serial Mouse** devices are plugged in or being used on the host computer. It is recommended that a “Serial Mouse” not be used in conjunction with the ZYTOUCH® Projected Capacitive touchscreen. It is recommended that only a **PS/2** mouse be used.
- Ensure that all other touchscreen manufactures Driver Software/old touchscreen Driver software is uninstalled from the host computer to avoid software conflicts.
- Ensure that there is a free **Serial Com Port** available on the host computer to connect the ZYTOUCH® Projected Capacitive touchscreen to. The Com Port connection used can be any between Com Port 1 up to Com Port 8 only. Ensure that no other device/software is using the selected Com Port.
- Ensure that the ZYTOUCH® Projected Capacitive touchscreen is **NOT** connected until the ZYTOUCH® Projected Capacitive Driver Software has been successfully installed first.

1.10 Contacting Zytronic

Sales and Technical support:

Zytronic Plc.
Patterson Street
Blaydon
Tyne and Wear
NE21 5SG
United Kingdom

Tel: +44 (0)191 414 5511
Fax: +44 (0)191 414 0545

E-mail: info@zytronic.co.uk

Web: <http://www.zytronic.co.uk>



2.0 INSTALLING THE ZYTOUCH® PROJECTED CAPACITIVE TOUCHSCREEN

This section of the manual presents several recommended integration guideline scenarios for the ZYTOUCH® Projected Capacitive touchscreen.

Notes:

- Before integrating the ZYTOUCH® Projected Capacitive touchscreen ensure that it is **NOT** connected to your computer.
- The following integration guidelines are typical recommendations.
- Correct integration of the ZYTOUCH® Projected Capacitive touchscreen product is vital to achieve correct performance.
- Metal work can have a detrimental effect on the performance of the ZYTOUCH® Projected Capacitive touchscreen if integrated incorrectly, therefore guidelines should be followed.
- Integration diagrams outlined in this section are side profiles and are not to scale.

2.1 Typical Integration Guidelines

Figure 1, 2 and 3 all show typical recommended integration guidelines for the ZYTOUCH® Projected Capacitive touchscreen.

Figure 1 illustrates a **Direct Touch** integration with a typical front bezel which can be made either from plastic or metal.

Figure 2 illustrates a **Through Touch** integration with a front sacrificial glass and front bezel which can be made either from plastic or metal.

Figure 3 illustrates a **Through Touch** integration with a front sacrificial glass only.

- The spacing between the Display and the rear of the Touchscreen should be at least 3mm.
- This 3mm spacing should be created using a double sided adhesive gasket (i.e. VHB tape or some form of foam gasket). Layers of gasket may have to be built up to obtain the required spacing. The important point here is that even under compression the uniform spacing should remain at least 3mm.
- Once the gasket has been fitted, the touchscreen should be secured on top of the gasket.
- Make sure that the active area of the touchscreen is aligned with the viewable area of the Display and that there is no excessive flexing or mechanical movement between the touchscreen and the Display.
- If a front bezel is to be fitted then this also must be spaced off the front of the touchscreen using a 3mm double sided adhesive gasket. This 3mm gasket can be applied directly to the edges of the touchscreen and the spacing must be maintained even under compression.
- For metal bezels that are fitted to the front of the touchscreen, the installer must ensure that no metal work is directly touching the surface of the touchscreen or active area.
- Ensure that the front metal bezel and all metal work are correctly earthed to a known common earth point using earthing straps.
- Ideally the front metal bezel aperture should be 10mm greater all round than the active area of the touchscreen, as illustrated in Figure 4. If this is not possible, then the application software that is to be executed in the final application should have all critical activation buttons placed as least 10mm in from the edge of the active area of the touchscreen. Activation buttons should also be made a significant size for ease of use by the user. Avoid placing critical activation buttons in extreme corners or edges of the touchscreen active area.

- Having worked through this user manual and installed and set up the software, if the system appears to be “noisy” i.e. the mouse pointer displays an unwarranted amount of random mouse pointer movement with no applied touch, then experimentation may need to be carried out with the spacing between the Display and touchscreen or touchscreen and metal work, i.e. the spacing may need to be increased.

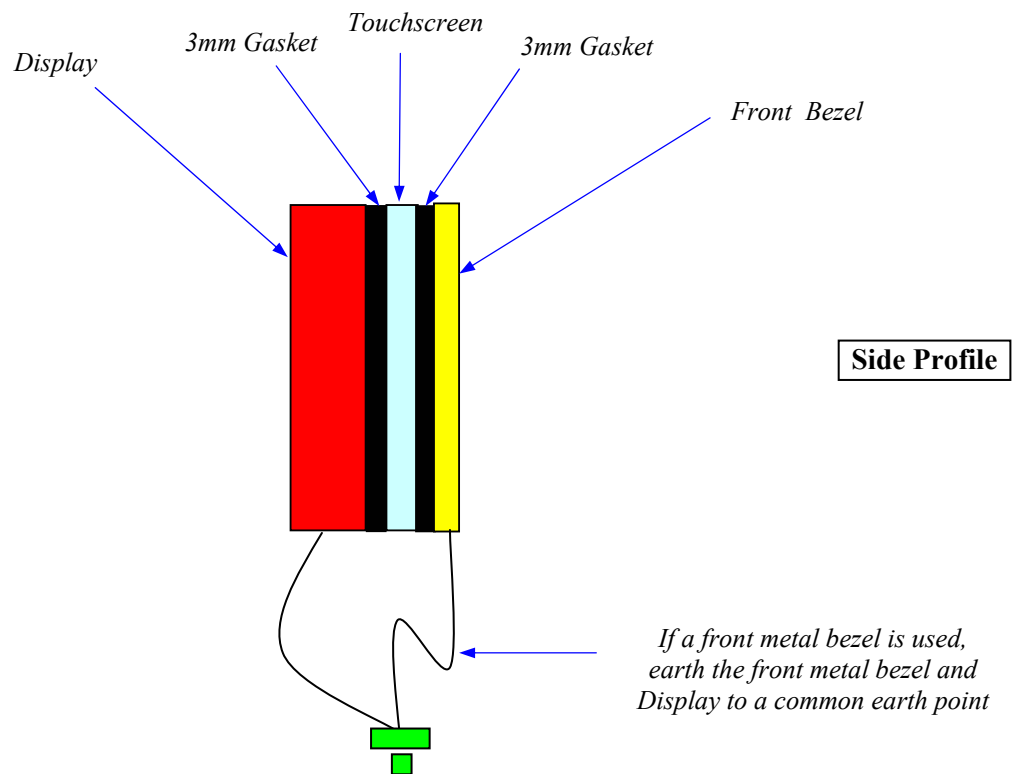


Figure 1: *Direct Touch integration with a typical front bezel which can be made from either plastic or metal*

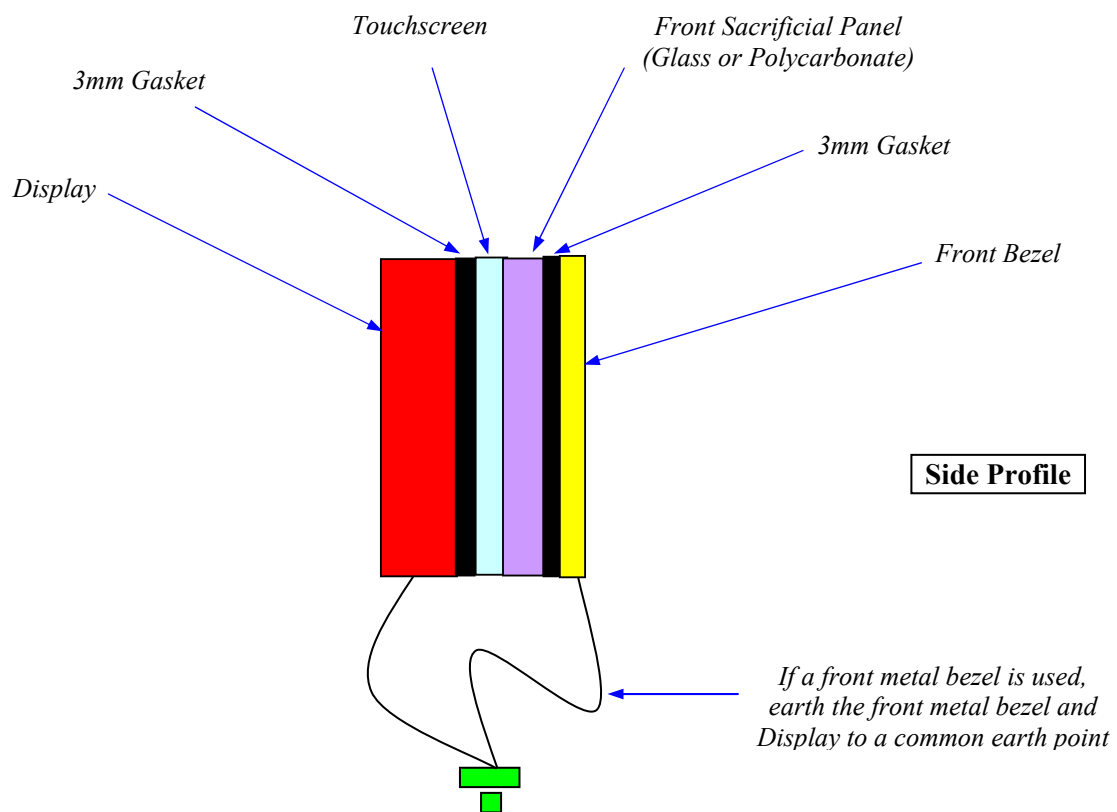


Figure 2: Through Touch integration with a front sacrificial glass and front bezel which can be made from either plastic or metal

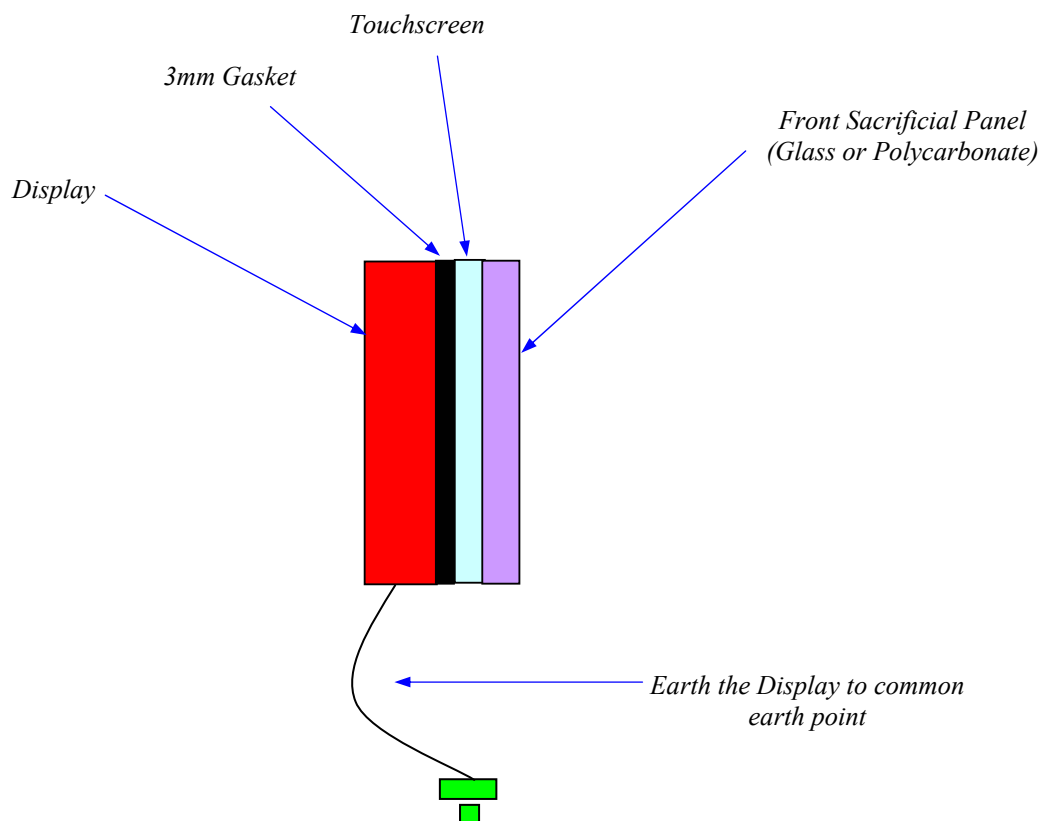


Figure 3: Through Touch integration with a front sacrificial glass only

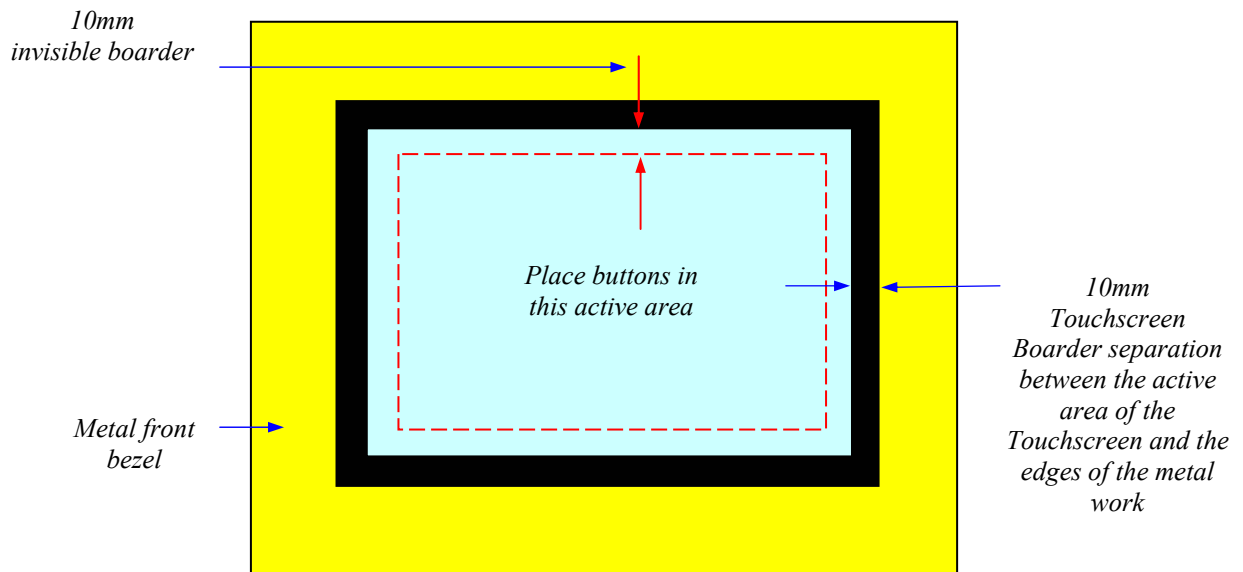


Figure 4: Recommended Metal bezel spacing and activation button placements

Note: For Through Touch application, placing two glass surfaces directly on top of each other may cause an optical Newton Ring effect. This can be overcome by selecting a touchscreen construction with an Anti-glare front glass surface etch or by simply placing a small air gap of less than 0.5mm between the two affected surfaces.

2.2 Integration Disclaimer

The integration information provided in Section 2.1 is for guidance purposes only and may not be suitable for the installation of all units. It is therefore the sole responsibility of the integrator to satisfy itself that the methodology and materials it intends to use are suitable and compatible with the proposed system of installation and integration and with the Zytronic product.

Zytronic will not accept any liability for damage or degradation of the physical sensor, or sensing degradation, due to the application of incorrect integration procedures, or the use of inappropriate materials (bonding agents, gaskets, etc) through third party integration especially in relation to clearance gaps and metalwork interference parameters, which are clearly stated in section 2.1.

Zytronic will, if requested, provide reasonable assistance without prejudice in the evaluation of a proposed integration but Zytronic shall not be liable for any advice or assistance given and the provision of such advice or assistance shall not affect the provisions of this clause. Requests for assistance must be made to Zytronic's Technical Department direct.



3.0 INSTALLING THE ZYTOUCH® PROJECTED CAPACITIVE DRIVER SOFTWARE

This section of the manual describes the step-by-step process to install the ZYTOUCH® Projected Capacitive Driver software onto your computer.

Note: Before installing the ZYTOUCH® Projected Capacitive Driver Software ensure that the ZYTOUCH® Projected Capacitive touchscreen is **NOT** connected to your PC.

3.1 ZYTOUCH® Projected Capacitive Driver Software

Before installing the Driver software you will need to download the latest software and manual from the Zytronic website (<http://www.zytronic.co.uk/downloads.htm>). The Driver software installation described in this manual is for use with the ZYTOUCH® Projected Capacitive Serial Communication product only.

3.2 Driver Software Installation

To install the Driver Software carry out the following:

1. Log on to the Zytronic website (<http://www.zytronic.co.uk/downloads.htm>) and download the latest ZYTOUCH® (Serial) Driver software zip file onto to your PC Windows desktop.
2. Un-zip the Driver files onto your PC Windows desktop.
3. The Un-zipped files are illustrated in Figure 5.

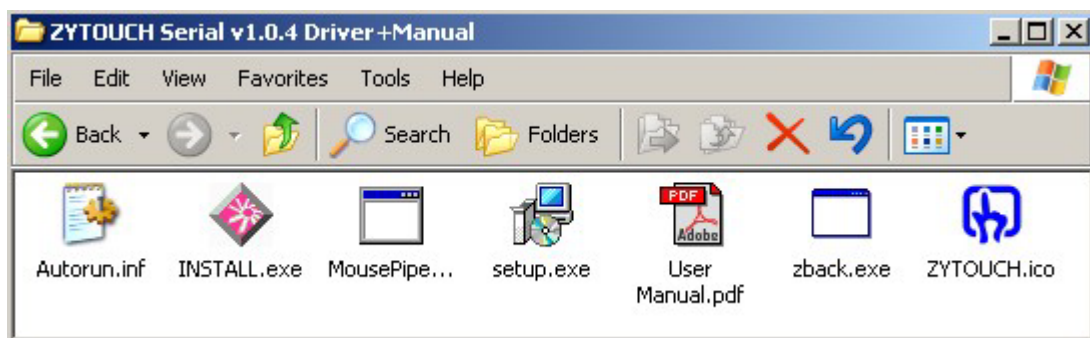


Figure 5: ZYTOUCH® Driver software Installation files

4. Using your mouse double click onto the **INSTALL.exe** icon.
5. Having double clicked onto the **INSTALL.exe** file the ZYTOUCH® Installation Guide splash page will be displayed, as illustrated in Figure 6. This page gives the user the following selectable options:
 - a. ZYTOUCH® Driver.
 - b. ZYTOUCH® User Manual.
 - c. ZYTRONIC PLC Website.
 - d. Install Acrobat Reader (Required to read the User Manual).
6. Click on the ZYTOUCH® Driver, as illustrated in Figure 6.



Figure 6: *ZYTOUCH® Installation Guide splash page*

The installation commences with the following screen, as shown in Figure 7.

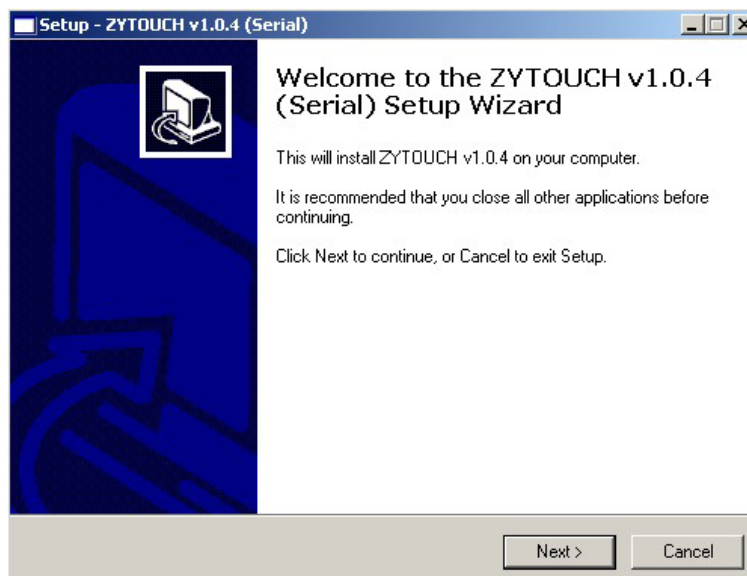


Figure 7: *Setup Wizard program preparing to install*

Follow the on screen prompts by clicking the **Next** button. The stages are as follows:

1. Accept the License agreement.
2. Select destination location to install the Driver files. The default location is recommended.
3. Select a Windows Start menu folder location to install the shortcuts to the Driver files. The default location is recommended.

4. The chosen installation destinations are presented to the user. If the install locations are acceptable select the **Install** button.
5. Driver installation is carried out.

On completion of the software installation the user is presented with the following screen, as shown in Figure 8.

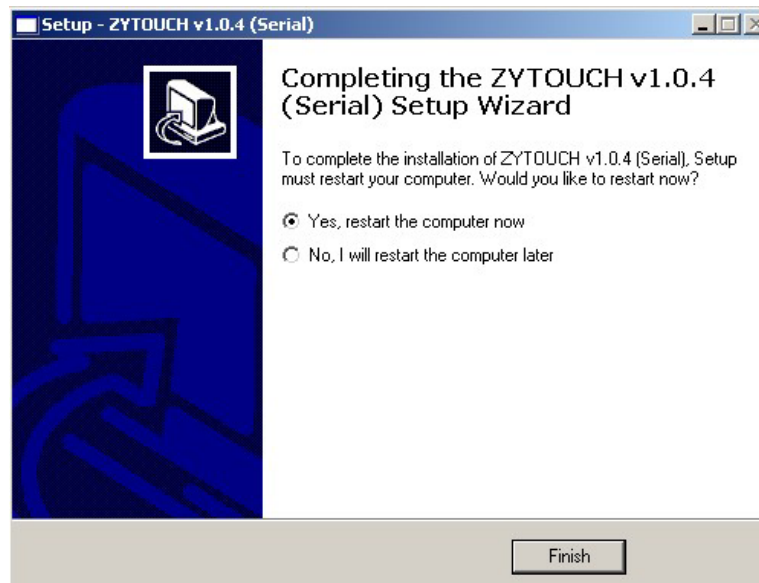


Figure 8: *Setup Wizard complete*

The user must select the **Finish** button. This will restart the computer and complete the installation process. The ZYTOUCH® Projected Capacitive Driver Software is now ready for use.

If the default installation location is selected during the installation setup the Driver files will be located in:

C:\Program Files\ZYTOUCH

Figure 9 illustrates the files that are contained in this location:

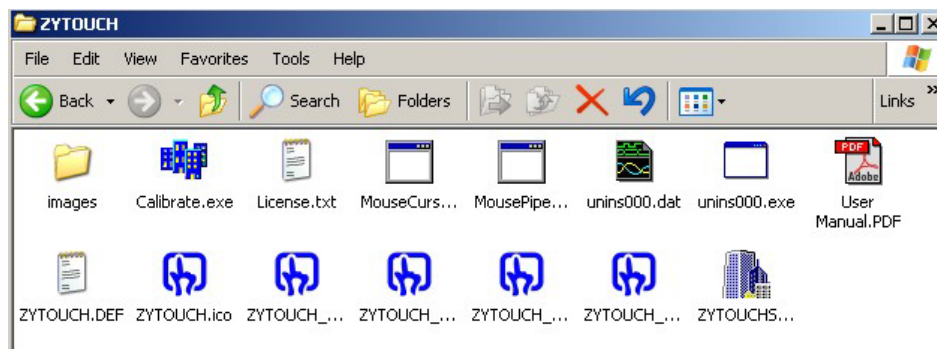


Figure 9: *Installed ZYTOUCH® Projected Capacitive Driver Files*

ZYTOUCH_Control.exe - This is the Control Panel program which is the main interface used by the user to set up the functionality and performance of the ZYTOUCH® Projected Capacitive touchscreen.

ZYTOUCH_Driver.exe - This is the main Driver that interfaces with the touchscreen and controls the mouse pointer.

ZYTOUCH_HotKey.exe - This allows certain functions of the Control Panel to be executed from Keyboard Hot Keys.

ZYTOUCH_RightClick.exe - This is used by the Driver to allow right click functionality to be executed.

Calibration.exe – This is a calibration routine that can independently executed.

ZYTOUCH.ico - This is ZYTOUCH® icon.

ZYTOUCH.DEF - This is a text file that the Driver uses to configure certain parameters.

License.txt - This is a copy of the software license agreement which was accepted during installation.

MouseCursor.exe – This is a mouse pointer generation program.

MousePipeService.exe – This allows the driver to run as a service for operation per-windows login (This operation is only available on Microsoft® Windows® 2000 and Microsoft® Windows® XP).

ZYTOUCHSTOP.exe, Unins000.dat and Unins000.exe – These are uninstall files that are used to remove the software.

Images – This contains the Zytronic logo images used in the Touchscreen Control Panel.

User Manual.pdf - This is the User Manual for the ZYTOUCH® Projected Capacitive Touchscreen.

As well as installing the above files the installation program also places shortcut links to some of the above files into the Windows **Start, Programs, ZYTOUCH** folder.

Finally the installation program also places shortcut links to the **ZYTOUCH_Driver.exe, ZYTOUCH_HotKey.exe, ZYTOUCH_RightClick.exe** and the **MouseCursor.exe** into the Windows **Startup** folder. This is so that every time a re-boot occurs the touchscreen Driver software will automatically load each time the Windows environment is loaded.

IMPORTANT: Having successfully installed the Driver software it is important to allow the install program to RESTART YOUR COMPUTER.

3.2.1 Driver Software Installation Notes for Windows 2000 Users Only

If you are running a Windows 2000 operating system you will need to ensure that Service Pack 3 is installed onto your system prior to the Driver Software installation. If you do not have Service Pack 3 installed onto your system please install it before installing the ZYTOUCH® Projected Capacitive touchscreen Driver software.

3.2.2 Driver Software Installation Notes for Windows 2000 and Windows XP Users

If you are running a Windows 2000 or Windows XP operating System, during the Setup Wizard installation of the Driver Software, the installation software scans the host computer to determine how many Serial Communication Ports are available on the host computer. The detected available Communication Ports are displayed to the user (up to a maximum of 8), as illustrated in Figure 10.

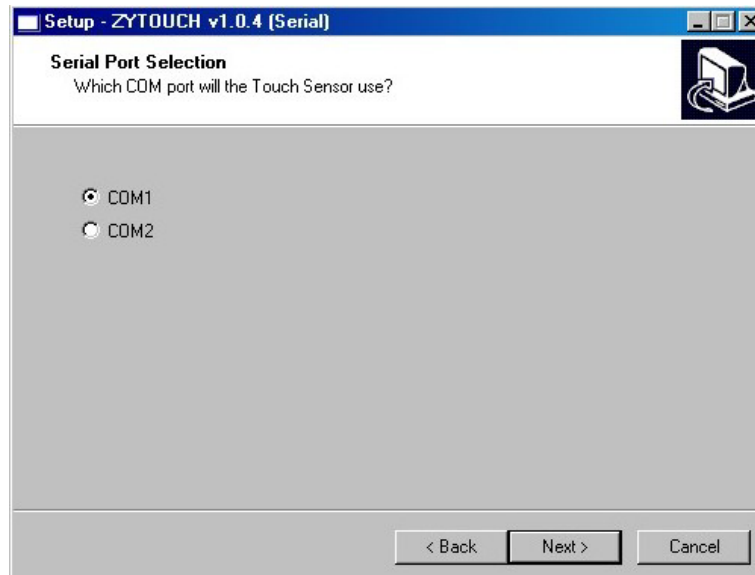


Figure 10: *Communication Port Selection to connect the touchscreen
(Two available Com Ports detected in this example)*

The user is required to select the Serial Com Port to which the ZYTOUCH® Projected Capacitive touchscreen will be connected.

IMPORTANT: The user must select a Com Port that is **NOT** used by any other device or Driver Software to avoid software conflicts.

Having selected the desired Communication Port the touchscreen will be connected to, proceed with the Driver Software installation as normal by selecting the **Next** button.

3.3 Connecting the ZYTOUCH® Projected Capacitive Touchscreen to the Host Computer

Once the ZYTOUCH® Projected Capacitive Driver software has been successfully installed the ZYTOUCH® Projected Capacitive touchscreen can now be connected to the host computer. The touchscreen can be connected to any unused **Serial Com Port between 1 and 8 (this must be the same serial port as selected in the software installation setup)**. Only the ZYTOUCH® Projected Capacitive Driver software should access this port, any other devices, drivers or programs **must not** address or use the selected Com Port. The touchscreen is powered from the host computer via the Serial RS232 DTR and RTS lines, therefore no external power supply is required. Voltages between 6V and 12V are acceptable to power the touchscreen.

3.3.1 Important Connectivity Notes for Windows NT Users

If you are running a Windows NT Operating System (i.e. NT4.0) the following patch must be implemented **before** connection of the ZYTOUCH® Projected Capacitive touchscreen to the host PC:

1. Cold-boot the machine **WITHOUT** the ZYTOUCH® Projected Capacitive touchscreen connected.
2. Once the machine has booted connect the ZYTOUCH® Projected Capacitive touchscreen to an unused Serial Com Port and run **ZYTOUCH_Control.exe**. Make a note as to which Serial Com Port the touchscreen is connected.
3. Using NT Windows **Explorer**, locate the file called **boot.ini** and change its file attributes so that the file is **NOT** read-only.
4. Add with one space the following **/NoSerialMice:COMX** (where X is the relevant Serial Com Port number to which the touchscreen is connected) to the following line:

multi(0)disk(0)rdisk(0)partition(3)\WINNT="WindowsNT Workstation Version 4.00"

5. Therefore for an installation where Com 1 is selected for use and the ZYTOUCH® Projected Capacitive touchscreen will be attached to, the typical **boot.ini** should read:

```
[boot loader]
timeout=30
default=multi(0)disk(0)rdisk(0)partition(3)\WINNT
[operating systems]
multi(0)disk(0)rdisk(0)partition(3)\WINNT="Windows NT Workstation Version 4.00"
/NoSerialMice:COM1
multi(0)disk(0)rdisk(0)partition(3)\WINNT="Windows NT Workstation
Version 4.00 [VGA mode]" /basevideo /sos
C:\="Microsoft Windows"
```

Note: It is essential to ensure that a space is left between 4.00" and the /NoSerialMice.



4.0 CONFIGURING THE ZYTOUCH® PROJECTED CAPACITIVE DRIVER SOFTWARE AND TOUCHSCREEN

This section of the manual describes how to configure the ZYTOUCH® Projected Capacitive Driver Software and touchscreen.

Note: It is recommended that a mouse be used for the initial setting up of the touchscreen parameters.

4.1 Launching the Touchscreen Control Panel

To begin the configuration procedure of the ZYTOUCH® Projected Capacitive touchscreen, the user must launch the Touchscreen Control Panel. The Touchscreen Control Panel program is the main interface used to configure the functionality and performance of the ZYTOUCH® Projected Capacitive Touchscreen. To launch the Touchscreen control panel carry out the following:

1. Click on the Windows **Start** button.
2. Go to **Programs** and locate the **ZYTOUCH** folder.
3. Within the **ZYTOUCH** folder click on the **ZYTOUCH_Control.exe** shortcut link.

This will open the Touchscreen Control Panel.

The various functions of the Touchscreen Control Panel are grouped into unique separate areas that are accessed by clicking on the individually labelled tabs located along the top of the Control Panel. The following sections describe each of these areas in turn.

4.2 Contact Page

When launching the Touchscreen Control Panel, the first page that is always displayed is the **Contact** page, as shown in Figure 11. This page contains contact details of Zytronic Plc and should be used for customer support and technical enquiries.



Figure 11: Contact Page

4.3 Connection Page

Having successfully connected the ZYTOUCH® Projected Capacitive touchscreen to the host computer and launching the Driver Software, select the **Connection** tab. The Connection page is illustrated in Figure 12.

The **Driver Status** area of this page highlights the current status of the Driver. If the Driver software has been successfully installed and launched this is acknowledged by the illumination of a green box with the words **Driver Present** illuminated. If there was a fault with the **Driver Status** the same box would be displayed in Red with the words **Driver Not Present** illuminated, indicating a fault.

There are three other buttons within the **Driver Status** box. The **Reset Driver** button re-initialises the Driver software removing any glitches from the system. The **Stop Driver** and **Start Driver** buttons can be used to completely stop the Driver software and also restart the Driver software. It should be noted that if the Driver software is stopped all communication between the touchscreen and the host computer will stop until the Driver is restarted again.

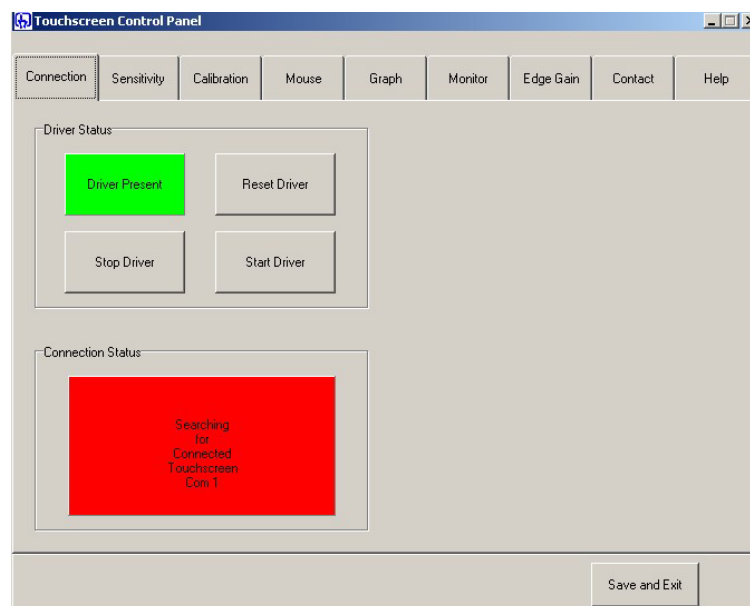


Figure 12: Connection page with search for connected touchscreen in progress

The **Connection Status** box will remain illuminated in red with the words **Searching for Connected Touchscreen X** (where X is the Serial Com Port currently being interrogated) until the connected touchscreen has been found. The Serial Com Port search is between Serial Com Port 1 and Serial Com Port 8.

Once the connected touchscreen has been found the **Connection Status** box will change colour to be illuminated in green. The words **Touchscreen Found on X** (where X is the Serial Com Port the touchscreen is physically connected to) will be illuminated, as illustrated in Figure 13.

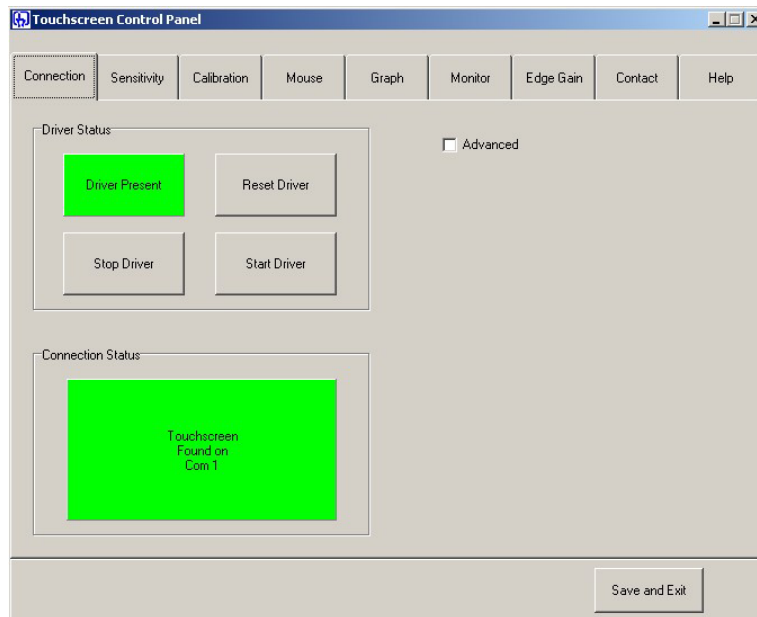


Figure 13: Touchsreen successfully found on Serial Com Port 1

4.3.1 Connection Page – Advanced

When the connected touchscreen is successfully found, an **Advanced** tab appears on the top right hand side of the **Connection** Page. Further information can be obtained about the status of the touchscreen by selecting the **Advanced** tab, as illustrated in Figure 14.

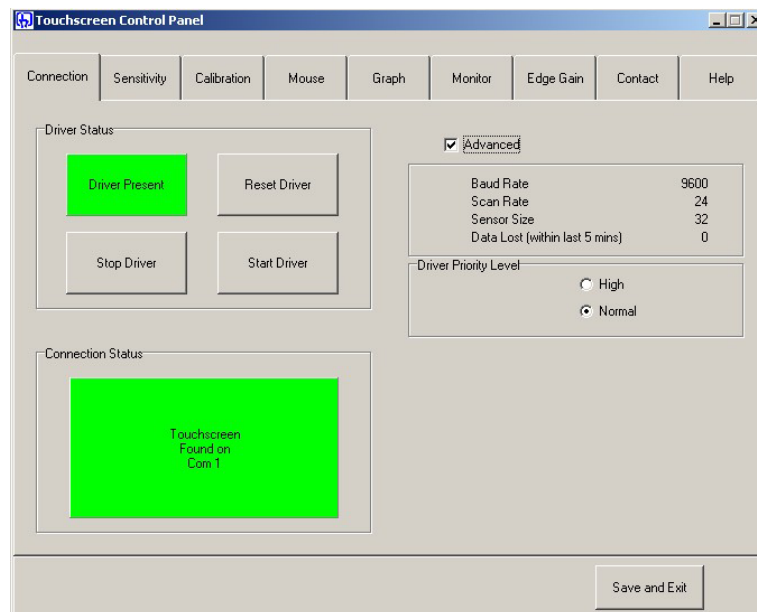


Figure 14: Advanced tab selected

The **Advanced** area provides the user with the following information:

Baud Rate – This figure is the actual speed of communication between the touchscreen and the Serial Com Port of the host computer. This is generally either 9600 or 19200.

Scan Rate – This figure is the number of data scans per second. There is a trade off between sensitivity of the touchscreen and the speed of the touchscreen response, i.e. a faster scan rate means the projected capacitive field is weaker (less sensitive) and vice versa. The scan rate is set at the factory dependant upon the intended usage of the touchscreen, i.e. either Direct Touch or Through Touch application.

Sensor Size – This is the number of wires embedded within the touchscreen laminate construction, normally 64, 32 or 16.

Data Lost – This figure is the total amount of data scans that have not been captured by the Driver within the last 5 minute period.

Driver Priority Level – This setting changes the level of processing priority the Windows operating system allocates the touchscreen Driver software over other applications that are running at the same time. The default setting is **Normal**. In certain scenarios where processor hungry graphical applications are being used on the same system, the touchscreen mouse pointer movement can sometimes appear delayed due to the lower priority level of the Driver software relative to other applications which are running. Setting the touchscreen **Driver Priority Level** to **High** allows the Windows operating system to allocate an increased processing priority to the touchscreen Driver software, hence improving performance.

The **Advanced** details can be hidden at any time by de-selecting the **Advanced** tab.

4.4 Sensitivity Page

Select the Sensitivity tab. The **Sensitivity** page is used to set the sensitivity levels of the touchscreen relevant to an applied touch. An applied touch to the surface of the touchscreen is translated into mouse activation and movement depending upon the sensitivity levels set. The **Sensitivity** page is illustrated in Figure 15.

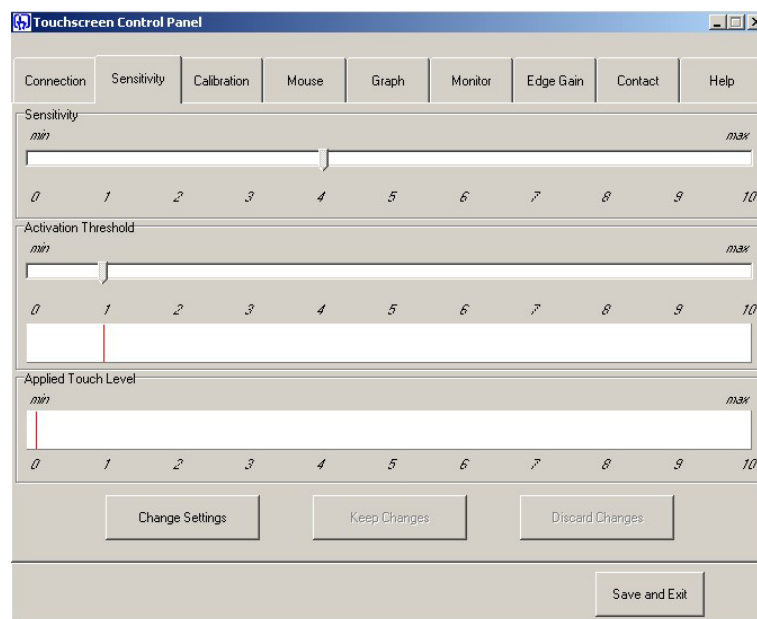


Figure 15: Sensitivity Page

The **Sensitivity** slider, situated at the top of the page, is used to set the sensitivity of an applied touch which controls the movement of the mouse pointer. If the slider is set to the right, the touchscreen is

more sensitive to an applied touch to the surface. **Sensitivity** levels may have to be varied dependant upon front glass thickness or if the system is to be used with a gloved hand.

The **Activation Threshold** slider is used to set the activation point where an applied touch is to simulate both mouse pointer movement and a mouse button press.

The moving indicator called **Applied Touch Level** illustrates the strength of signal the touchscreen is receiving from an applied touch. It is this signal that must constantly pass the **Activation Threshold** level setting to obtain mouse operation.

4.4.1 Setting the Sensitivity and Activation Threshold of the Touchscreen

Upon initial inspection of the **Sensitivity** page the user will see that the sliders that are used to alter the various parameters on the page are locked and cannot be moved. This is to prevent slider settings being accidentally altered.

The sliders can only be altered by unlocking the page using the **Change Settings** button located at the bottom of the **Sensitivity** page. By clicking on the **Change Settings** button, this unlocks the sliders and also enables two other buttons called **Keep Changes** and **Discard Changes**, as illustrated in Figure 16.

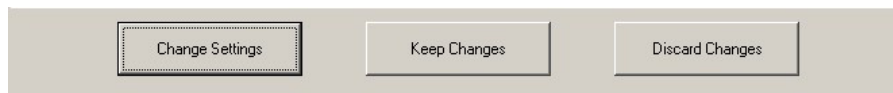


Figure 16: *Change Settings, Keep Changes and Discard Changes buttons*

Having selected the **Change Settings** button the user has a time period of **20 seconds** to make the necessary parameter changes on the **Sensitivity** page. After a period of **20 seconds** the sliders on the page will once again lock and revert back to their previously stored old settings. During the **20 second** period, if a desirable setting is obtained the user must select the **Keep Changes** button to keep the new settings and prevent the old settings being restored after the **20 seconds** have expired. If during the **20 second** period the new settings are not desirable then the user can also choose to select the **Discard Settings** button which will restore the previously stored old settings.

It is recommended that when setting the **Sensitivity** for a system, that a touch be applied lightly onto the surface of touchscreen. Adjustments should then be made to the **Sensitivity** slider such that the **Applied Touch Level** indicator always passes the **Activation Threshold** that has been set when a touch is applied. (The **Activation Threshold** slider default position is 1 and the **Sensitivity** slider default is position 4). Try applying a touch to several places on the touchscreen active area to check that the **Applied Touch Level** always passes the **Activation Threshold**.

Note: Either the **Sensitivity** or **Activation Threshold** slider can be adjusted until the entire active area of the touchscreen is set up correctly.

When there is no touch applied to the touchscreen, the **Applied Touch Level** will show a slight jitter. This is general background noise picked up from the environment where the touchscreen is situated.

When a touch is applied to the touchscreen, the **Applied Touch Level** will indicate the strength of the signal, this is illustrated in Figure 17. In this example the **Applied Touch Level** (signal) has passed the **Activation Threshold** therefore this will be seen as a mouse operation.

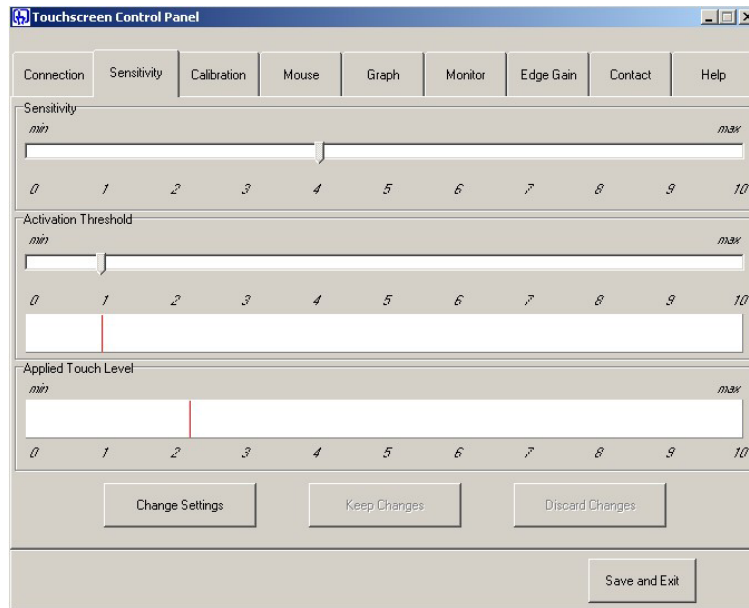


Figure 17: *Applied Touch Level increases with an applied touch to the touchscreen surface*

Note: It is important that the **Activation Threshold** is not set too low. If the background noise jitter (no touch applied) of the **Applied Touch Level** is allowed to pass the **Activation Threshold** then the noise will be seen as a valid touch which is not desirable. This will cause the system to produce random mouse pointer movements and mouse button clicks. In some cases if this occurs, to regain control of the system the touchscreen must be physically disconnected and Touchscreen Control Panel settings re-adjusted before reconnecting the Touchscreen.

4.5 Calibration Page

Select the Calibration tab. The **Calibration** function calculates the orientation and calibration of the touchscreen relative to the display. The **Calibration** page is illustrated in Figure 18.

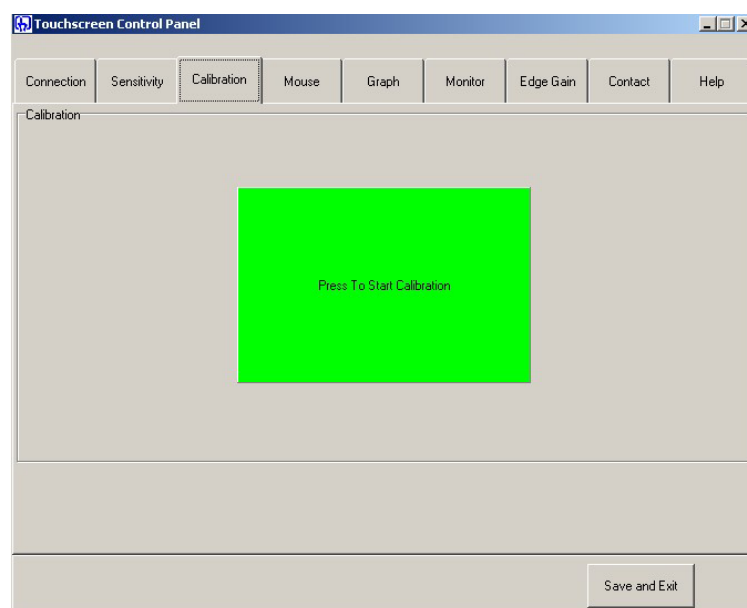


Figure 18: *Calibration page*

Select the **Press To Start Calibration** button. To calibrate the touchscreen the user is required to touch three targets that are presented on the display in three separate corners.

When each of the three separate target display screens are mapped onto the display, touch the centre of each target in turn by applying a **touch to the touchscreen and holding your finger steady in place**. Each target is displayed as a red circle. When a touch is applied to the centre of the target the circle begins to decrease towards the centre. **Remove your finger only when the next target appears**. Re-apply the touch to the centre of the next target. Once all three targets have disappeared the calibration is complete and the **Calibration** page as illustrated in Figure 18 is re-established.

Note: The **Calibration** sequence of three targets can be exited at any time by either **Applying and Holding a touch to the centre of the screen** or by pressing the **Esc key** on the host computer's keyboard.

The **Calibration** process is illustrated in Figure 19.

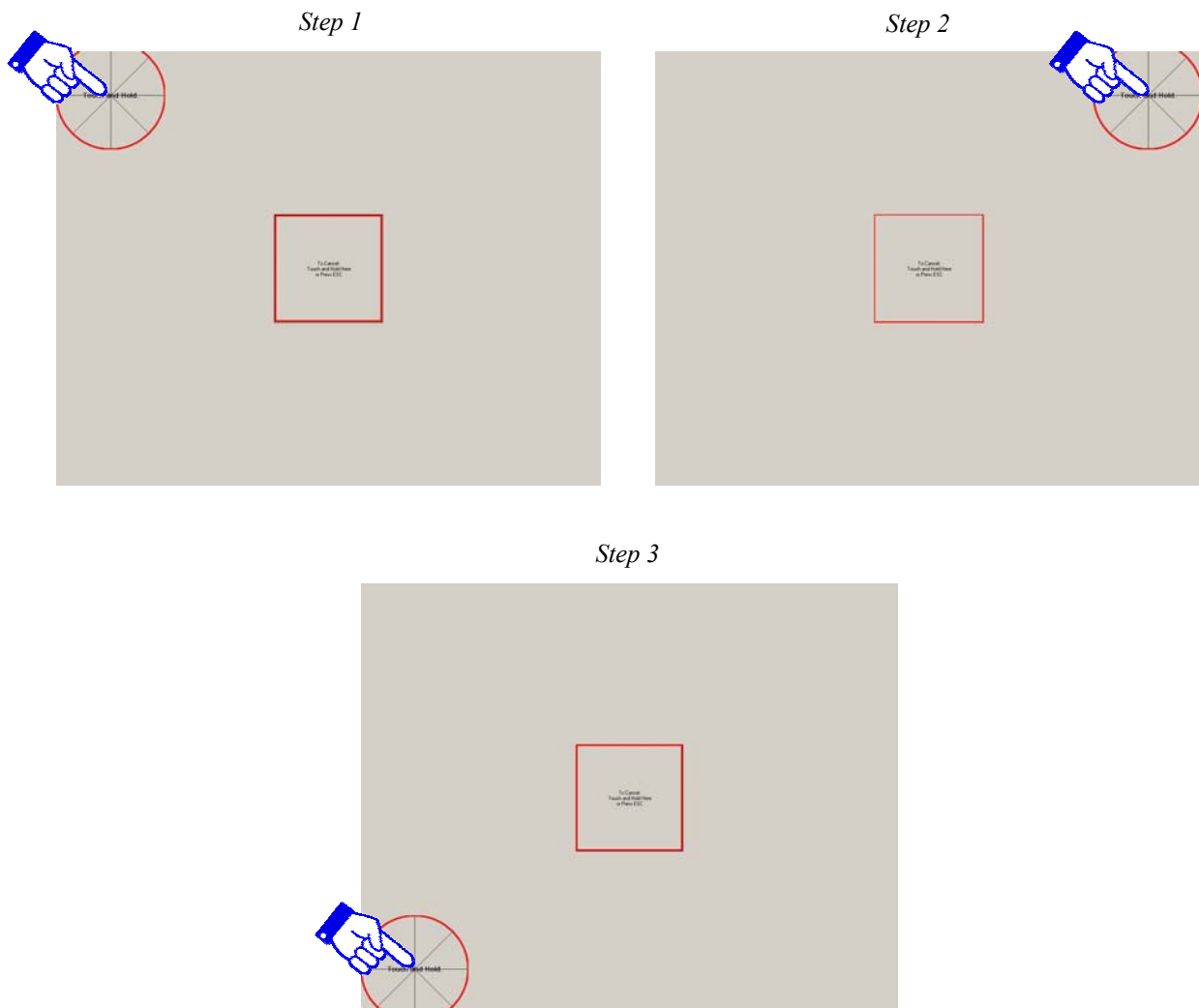


Figure 19: *Three target calibration screens. Apply and hold a touch on the centre of each of the targets*

4.5.1 Launching of the Stand Alone Calibration Routine using the Calibration.exe Icon

The Calibration routine can also be launch on its own using the **Calibration.exe** icon as shown below.



The **Calibration.exe** icon is located in two following two places:

- Windows **Start, Programs, ZYTOUCH** folder.
- **C:\Program Files\ZYTOUCH** folder.

The **Calibration.exe** icon can be called manually or as part of an external software program.

This allows the touchscreen to be calibrated using the stand alone file. On completion of the Calibration, the information must be saved in the same way as outlined in Section 4.11, using the **Save and Exit** button.

4.6 Mouse Page

Select the Mouse tab. The **Mouse** page allows the user to select the type of mouse functionality to be emulated from an applied touch to the surface of the touchscreen. The **Mouse** page is illustrated in Figure 20.

There are six functionality setting that the user can select. These six options are:

Disabled – This disables both the mouse pointer and left button activation when a touch is applied to the touchscreen.

Move Mouse Only – This enables the mouse pointer movement but no left button activation when a touch is applied to the touchscreen.

Activate On Touch – This enables mouse pointer movement and left button activation when a touch is applied to the touchscreen.

Activate On Release – This enables mouse pointer movement when a touch is applied to the touchscreen and left button activation when the applied touch is released from the touchscreen surface. This can be used in applications where the user needs confirmation that the correct target has been selected before being activated with a button click by removing the applied touch.

Drag And Drop – This enables mouse pointer movement and left button activation when a touch is applied to the touchscreen surface. The left button stays pressed as the applied touch is moved around the touchscreen and the left button up does not occur until the applied touch is removed from the touchscreen surface. The item selected is dragged around the screen following the mouse pointer movement and it is released only when the applied touch is removed from the touchscreen surface.

Touch/Hold/Release – This enables mouse pointer movement and left button activation when a touch is applied to the touchscreen. The left button stays pressed as the applied touch moves around the touchscreen and left button up does not occur until the applied touch is removed from the surface of the touchscreen. The item selected remains selected but remains in its original position, it remains selected until the applied touch is removed from the surface of the touchscreen.

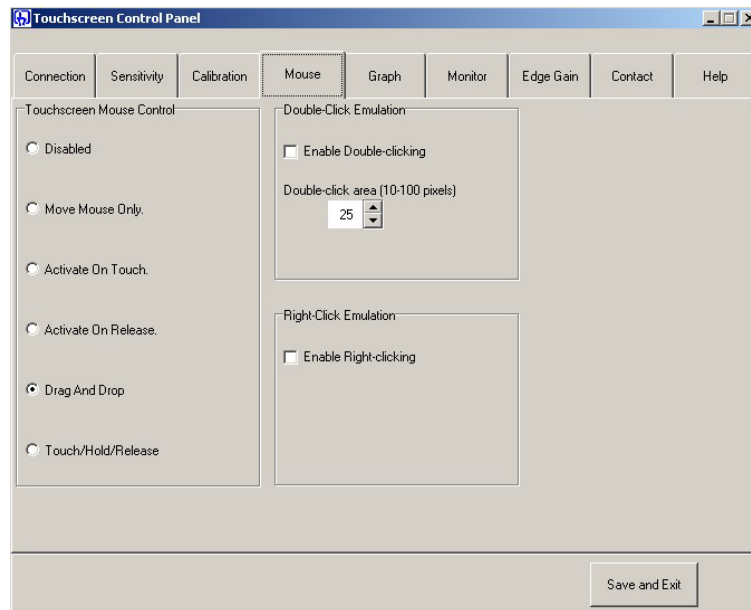


Figure 20: *Mouse Page*

4.6.1 Double-Click Emulation

The user also has the option to enable the **Double-Click Emulation** function by selecting the **Enable Double-clicking** tab, as illustrated in Figure 21. This option simulates Double-clicking functionality where the user needs to apply two touches in succession in relatively the same area of the touchscreen to initiate a double click response.

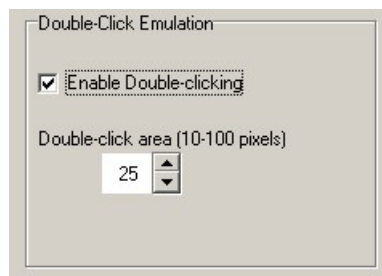


Figure 21: *Double-Click Emulation enabled*

The **Double-Click Emulation** functionality is only available in conjunction with the **Drag And Drop** mouse functionality setting. If the **Double-Click Emulation** is enable but the **Drag And Drop** mouse functionality is not selected then the **Enable Double-Clicking** tab will be de-highlighted and its function disabled, as shown in Figure 22.

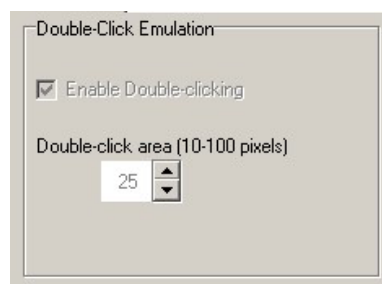


Figure 22: *Double-Clicking de-highlighted if Drag And Drop mouse functionality is not selected*

When the **Double-Click Emulation** is enable the user has the option to alter the **Double-click area**. The default value is **25 pixels**, however the range between **10 to 100 pixels** area can be selected. The greater the pixel area the great the chance the user has of touching the same area in succession to initiate a double click response.

4.6.2 Right-Click Emulation

The user also has the option to enable the **Right-Click Emulation** function by selecting the **Enable Right-clicking** tab, as illustrated in Figure 23.

This option simulates Right-clicking functionality. When the **Right-clicking** tab is enabled a Right-click window appears in the top right hand corner of the display, as illustrated in Figure 24. This window is permanently viewable as long as the **Right-clicking** tab is enabled, the window is always given priority over all other windows displayed.

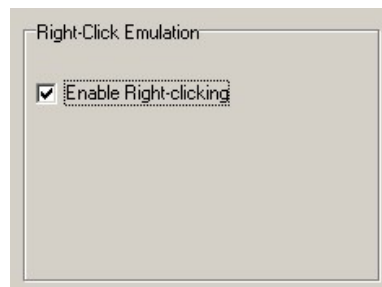


Figure 23: *Right-Click Emulation enabled*



Figure 24: *Right-Click Window*

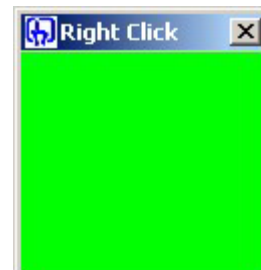


Figure 25: *Right-Click Window Activated*

To initiate a Right-click the user must apply a touch to the Right-click window. Once a touch is applied to the window, the window will turn green in colour, as illustrated in Figure 25. Once the Right-click window has turned green in colour, if the user now applies a touch to another area on the touchscreen this will initiate a Right-click. The next applied touch will then revert back to the default Left-click response. The default Left-click response will remain until the Right-click window is once again activated. The Right-click window can be moved into different areas of the display using a traditional mouse to drag and drop the window into the desired location.

The Right-clicking functionality is available in conjunction with **Activate On Touch**, **Activate On Release**, **Drag And Drop** and **Touch/Hold/Release** mouse functionality settings.

4.7 Graph Page

Select the **Graph** page. The **Graph** page can be used to check the integrity of the touchscreen. The ZYTOUCH® Projected Capacitive touchscreen comprises normally of 16 vertical and 16 horizontal wires embedded within the laminate construction (this can vary with product types). The movement of the 32 indicators on the **Graph** page visually represents the varying capacitance effect the applied touch has on these wires.

By running an applied touch around the touchscreen surface the effect of the applied touch on nearby wires can be seen on the **Graph**. As illustrated in Figure 26, an applied touch produces two curves in the wire indicators (X and Y axis). The ZYTOUCH® Projected Capacitive Driver software employs positioning algorithms that convert these wire responses into accurate positional co-ordinates in both the X and Y axis.

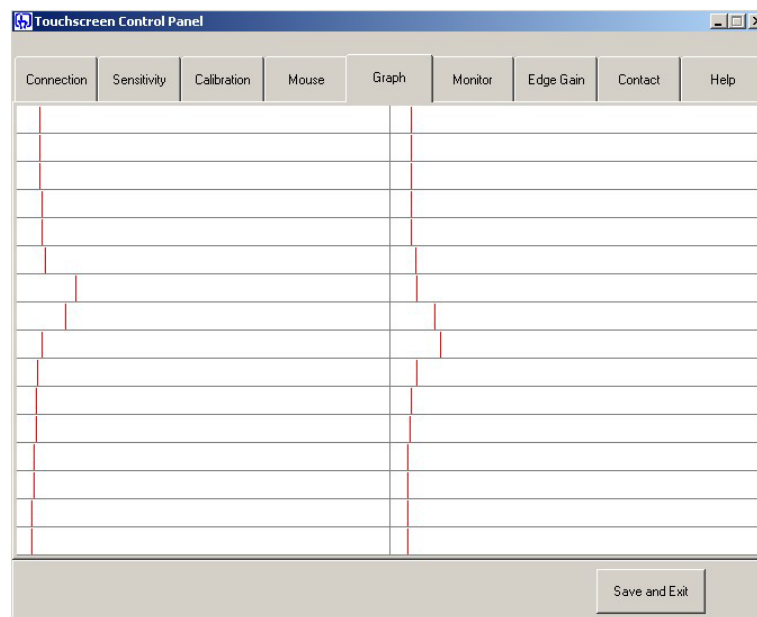


Figure 26: Detection in wire indicators in X and Y axis as a result of an applied touch

4.7.1 Testing the Touchscreen Integrity

Using the **Graph** as a visual guide, apply a touch to the surface of the touchscreen and drag the applied touch from left to right and top to bottom checking that each wire moves and performs in a similar manner to its neighbouring wires. The touchscreen will fail this test if any wires fail to move or perform very badly in comparison to the rest of the wires. If this occurs you should contact your ZYTOUCH® Projected Capacitive supplier.

4.7.2 Signal-to-Noise Check

There is always a small amount of noise pickup from the touchscreen; this can be seen by the 32 indicators, which randomly jitter constantly. The system can cope with these variations providing the noise is not excessive. Apply a touch to the surface of the touchscreen and compare the signal strength on the wires (shown by the **Graph** indicators) against the noise. Providing the peak noise is no more than at its worst case one third of the signal strength then this is ok.

If the system exhibits large amounts of noise then the source of the noise must be investigated. The most likely source is the separation between the display and touchscreen is too small or surrounding metal work needs to be correctly earthed (in the case of metal cased monitors or use of metal front bezels).

4.8 Monitor Page

Select the **Monitor** page. The **Monitor** page is used to check the output of the touchscreen over the whole active area which is represented by the white box in the centre of the page. This is useful in checking for any dead areas on the touchscreen and the performance of the touchscreen being able to follow the applied touch accurately and responsively.

Applying a touch to the surface of the touchscreen will result in a graphical representation being drawn within the white box area of the **Monitor** page, as illustrated in Figure 27. The area can be cleared by pressing the **Clear Monitor** button.

Note: When using this feature it is advisable to ensure that the output on the **Mouse** page is temporarily selected to **Disable**. This will prevent any damage being accidentally done to files when testing the performance of the touchscreen.

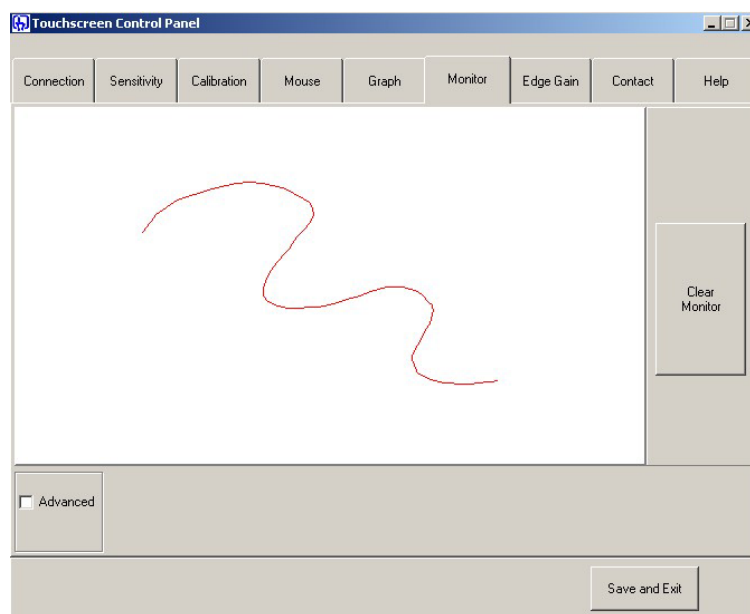


Figure 27: *Monitor page*

4.8.1 Monitor Page - Advanced

Located towards the bottom of the **Monitor** page is an **Advanced** tab option. Selecting the **Advanced** tab reveals the **Smooth Line** slider which is an inter-wire linearity adjustment.

The inter-wire linearity can be adjusted for better interpolation between the wires embedded within the touchscreen. The default setting is 0, which should be satisfactory for most applications. For large touchscreens the spacing between the neighbouring wires within the touchscreen are significant, therefore the slider may have to be adjusted to compensate for linearity variations across the touchscreen.

This can be tested by applying and dragging a touch diagonally across the surface of the touchscreen and observing the resulting line which is drawn on the **Monitor** screen. If linearity is set correctly then the line will be almost smooth. If it is set incorrectly the line will appear jagged, as illustrated in Figure 28.

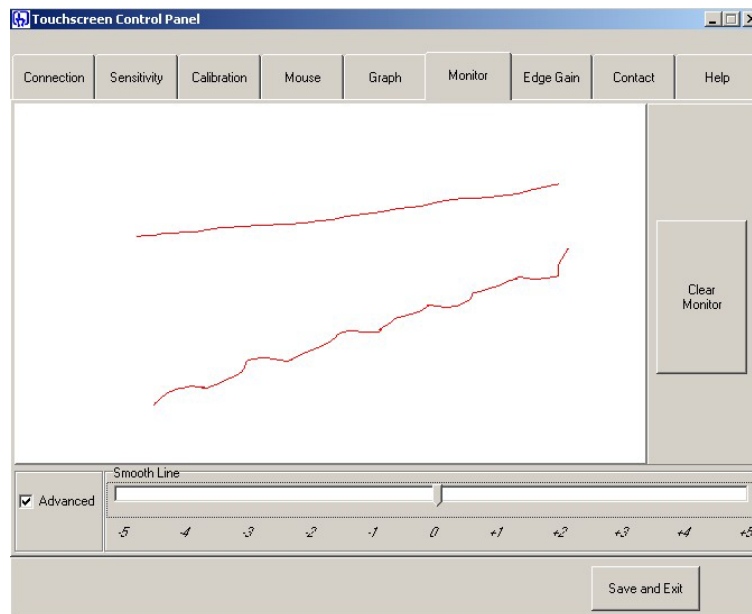


Figure 28: Example of Inter-Wire Linearity adjustment (Line Smoothing)

4.9 Edge Gain Page

Select the **Edge Gain** page. To allow easy access to slider bars and buttons that are located at the edges of the display in certain applications, the mouse pointer can be made to accelerate away from the finger towards the edge of the touchscreen. The amount/strength of acceleration can be adjusted via the **Edge Gain** controls, as illustrated in Figure 29.

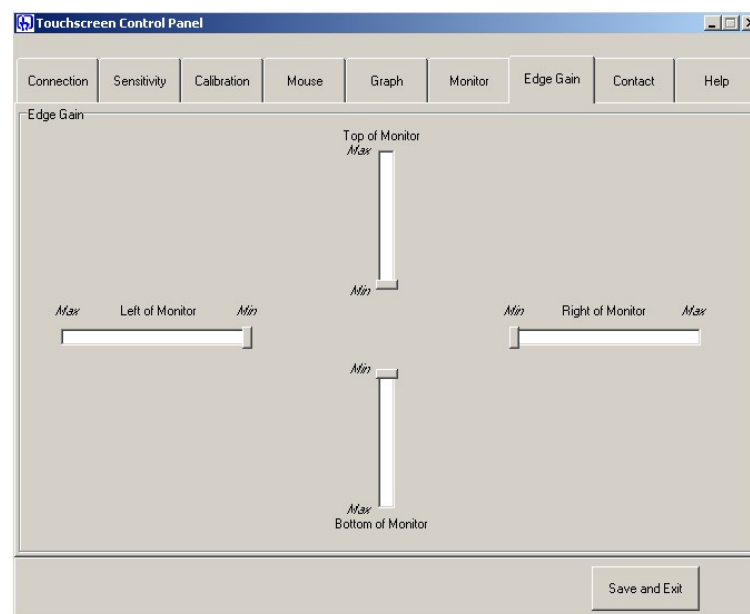


Figure 29: Edge Gain Page

Each of the **Edge Gain** sliders represents one edge of the touchscreen/display. The default positions are as illustrated in Figure 29, i.e. no mouse pointer acceleration.

The **Edge Gain** slider can also be used to counteract the signal dampening effects of nearby metal work/bezels that may surround the display/touchscreen area.

Some applications have activation buttons located at extreme edges of the display area. To assist in the selection of these buttons the Driver software can be made non-linear near the edges. When the **Edge Gain** sliders are located away from the centre this effect will be enhanced on the appropriate edges.

4.10 Help Page

Select the Help page. This page allows the user to gain easy access to this User Manual, Software Version, License agreement and Copyright information via the touchscreen Control Panel. The Help page facilities are illustrated in Figure 30

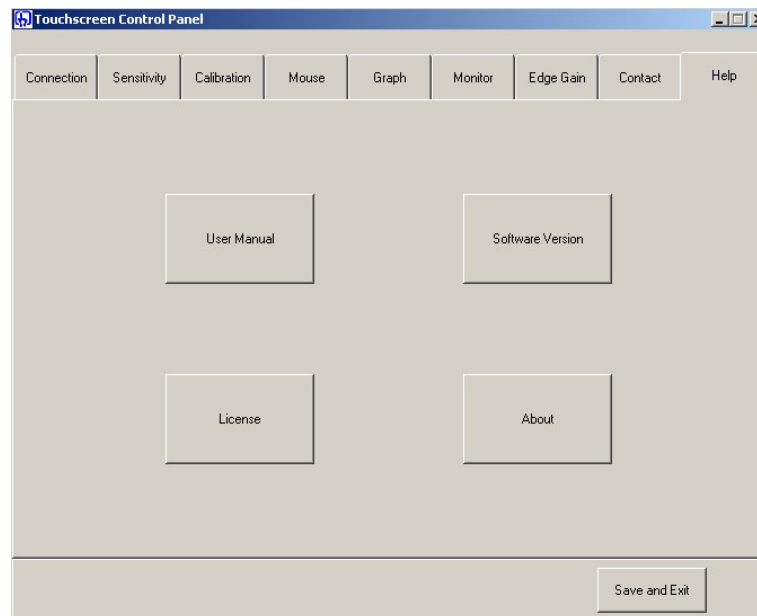


Figure 30: *Help page facilities*

4.11 Saving the Control Panel Settings

Having successfully configured the ZYTOUCH® Projected Capacitive Driver software and touchscreen, the final stage is to save the desired settings.

The option to **Exit and Save** exists on each page of the Touchscreen Control Panel. If there have been no changes to the Driver settings since the previous Save, then the **Save and Exit** button located at the bottom right of the Touchscreen Control Panel will display the **Exit** option, as illustrated in Figure 31.



Figure 31: *Exit Touchscreen Control Panel Option*

However, if changes in settings have taken place then the button will change to display **Save and Exit**, as illustrated in Figure 32.



Figure 32: *Save and Exit Touchscreen Control Panel Option*

If the **Save and Exit** button is selected and there are changes to be saved then the prompt box appears, as illustrated in Figure 33.

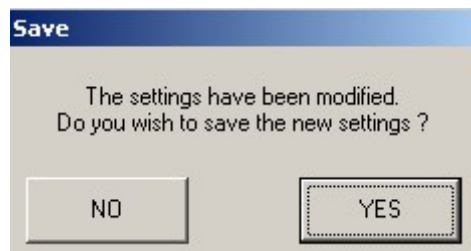


Figure 33: *Save Settings confirmation*

This gives the user an opportunity not to Save the latest changes and keep the previous settings. If option **Yes** is selected the user is then given the chance either exit or not exit the Touchscreen Control Panel, as illustrated in Figure 34.

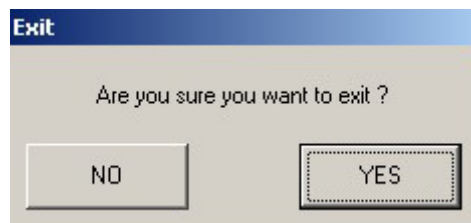


Figure 34: *Option to Exit the Touchscreen Control Panel*

Selecting **No** will return the user to the Touchscreen Control Panel, selecting **Yes** will exit the Touchscreen Control Panel, however the **ZYTOUCH_Driver.exe** will still be running in the background to allow continued use of the touchscreen.

Note: If you do not choose to **Save** your new settings on Exiting the Touchscreen Control Panel then your new Control Panel configuration settings will be lost.

4.12 Storage of the Saved Touchscreen Control Panel Configuration Settings

Having saved the Touchscreen Control Panel settings the **C:\Program Files\ZYTOUCH** folder will now contain the following files, as illustrated in Figure 35.

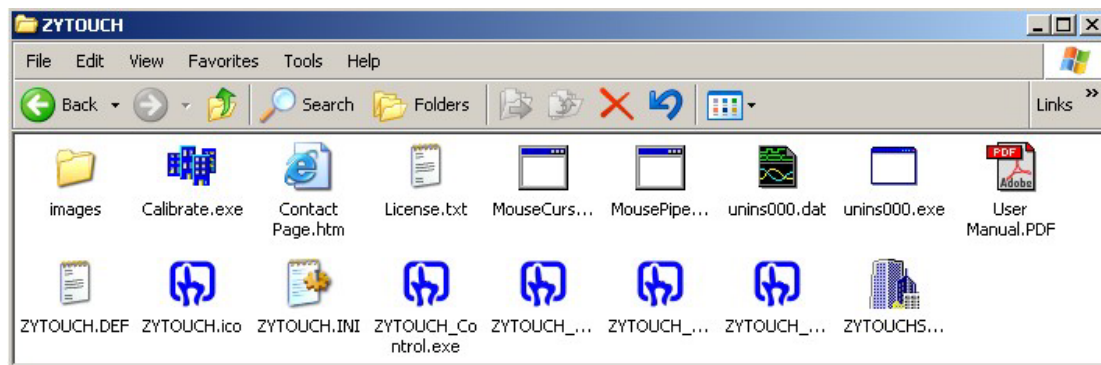


Figure 35: *ZYTOUCH® Projected Capacitive Driver files with Touchscreen configuration data stored in the ZYTOUCH.ini file*

If these files are now compared with the original files illustrated in Figure 9 just after installation, there are now two new files that have been generated during the configuration of the touchscreen using the Touchscreen Control Panel. The three new files are:

Contact Page.htm – This is the Zytronic contact details information page.

ZYTOUCH.INI – This file contains the touchscreen configuration settings.

The **ZYTOUCH.INI** file is an important file which contains all the touchscreen configuration settings that are configured by the user via the Touchscreen Control Panel. Each time the Control Panel settings are modified and saved, the new configuration settings are stored directly into the **ZYTOUCH.INI** file.

The **ZYTOUCH_Driver.exe** reads the **ZYTOUCH.INI** file every time the Driver is launched.

4.13 ZYTOUCH® Hot Keys

The ZYTOUCH® Driver software is equipped with Hot Key functionality. This allows the user to access certain functions by pressing **ALT+#**, where # is a function selection key. The available Hot Keys are listed below:

ALT+C - Launches the **Calibration** page, as illustrated in Figure 20. Note that only the Calibration function will be launched, all other parameters will be locked to prevent accidental modification.

ALT+S - This will **Stop** the **ZYTOUCH_Driver.exe** and will terminate the touchscreen operation.

ALT+R - This will **Re-Start** the **ZYTOUCH_Driver.exe** and will allow operation of the touchscreen to be re-established.

ALT+T - This will **Terminate** the **ZYTOUCH_HotKey.exe** and terminate all Hot key operations. The Hot key functionality can be re-established by selecting the **ZYTOUCH_HotKey.exe** from the Windows **Start** button, **Programs**, **ZYTOUCH** folder.

Note that the **ZYTOUCH_HotKey.exe** is launched every time you reboot your PC.

4.14 Process to Uninstall the ZYTOUCH® Projected Capacitive Touchscreen Driver

If the need ever arises where the ZYTOUCH® Projected Capacitive Touchscreen Driver needs to be uninstalled from the host computer, the following procedure should be followed (this will have to be carried out using a traditional mouse):

1. Selecting the Windows **Start** button, **Programs**, **ZYTOUCH** then click on **Uninstall ZYTOUCH.exe** option.
2. Confirm that you wish to completely remove the ZYTOUCH® Projected Capacitive Driver software from the host computer by selecting the **Yes** option.
3. The **Setup Wizard** will remove the ZYTOUCH® Projected Capacitive software from the host computer.
4. The user will be informed that to complete the uninstall process the computer must be restarted. Select the **Yes** option to restart the computer.
5. On restart of the computer all the ZYTOUCH® Projected Capacitive Driver files should have been removed successfully from the machine.
6. If necessary remove any associated remaining files from the system manually.

Notes:

- Removal of the ZYTOUCH® Projected Capacitive software Driver will terminate the operation of the ZYTOUCH® Projected Capacitive Touchscreen.
- A restart of the machine after executing the Uninstall procedure **MUST** be carried out to remove all the associated Driver files successfully.



5.0 TROUBLESHOOTING

Should you experience any operational difficulties with the touchscreen system either during or after installation, this section should help you determine the source of the problem. This section lists the most common issues experienced and provides comments and suggestions to alleviate the issues.

5.1 Common Problems and Recommended Solutions

<i>Problem</i>	<i>Comments and Suggestions</i>
ZYTOUCH® Projected Capacitive Driver software cannot find the attached touchscreen.	<ul style="list-style-type: none">• Ensure that the touchscreen connector is securely attached to a Serial Com Port on the host computer.• Ensure that the Serial Com Port the touchscreen is connected to resides between Com 1 to Com 8 (label within Operating System).• Ensure that no other device, driver or program is accessing the selected Serial Com Port the Touchscreen is connected to.
ZYTOUCH® Projected Capacitive Touchscreen performs badly around the edges of the display	<ul style="list-style-type: none">• Close proximity of metal frame work can potentially interfere with the touchscreen.• Ensure that no metal work is directly touching the touchscreen surface, sides or rear.• Interference may be reduced or overcome by increasing where possible the distance between metal work and the touchscreen active area.• Ensure that all metal work is correctly earthed to a common earth point using earth straps.• If possible coat metal work with insulating paint or plastic.• Utilise the Edge Gain control within the Touchscreen Control Panel (described in Section 4.9) to accelerate the mouse pointer into extreme corners or edge areas of the screen.
False touches are occurring with no touch applied to the touchscreen	<ul style="list-style-type: none">• If the noise on the system is great, then the Applied Touch Level indicator, located on the Sensitivity Page of the Touchscreen Control Panel, may move a small amount without the presence of an applied touch.• If the Activation Level slider, located on the Sensitivity Page of Touchscreen Control Panel, is set too low, then the noise on the system could trigger false touches when the Applied Touch Level becomes greater than the Activation Threshold.• Ensure that the Activation Threshold slider is set so that it is not passed by the Applied Touch Level indicator when no touch is applied. This can be achieved by altering the Activation Threshold slider or adjusting the Course Sensitivity slider to make the system less sensitive and less prone to noise pickup.
Failure to see mouse pointer movement when a touch is applied to the touchscreen	<ul style="list-style-type: none">• Ensure that the Disable mouse control on the Mouse page, within the Touchscreen Control Panel, is not selected.
Mouse pointer movement is not smooth	<ul style="list-style-type: none">• The linearity of the mouse movement can be adjusted using the Smooth Line function within the Monitor – Advanced page of the Touchscreen Control Panel (see Section 4.8.1)

Touchscreen configuration and changes made within the Touchscreen Control Panel are not being Saved	<ul style="list-style-type: none"> Ensure that the Save and Exit button, located in the bottom right hand corner of the Touchscreen Control Panel, is selected after a configuration or adjustment is made. Having selected the Save and Exit button, ensure that the Yes option to save the new settings is selected (see Section 4.11). This updates the ZYTOUCH.INI file with the new configuration settings.
Mouse pointer appears to be frozen	<ul style="list-style-type: none"> For the touchscreen to work correctly and effectively it must be provided with a steady environment, therefore if the monitor and touchscreen are parted, moved relative to each other or if surrounding metal work is removed, this could potentially upset the system. If this occurs the Reset Driver button on the Connection page of the Touchscreen Control Panel should be selected. This will reset the Driver software and re-initialise the touchscreen. In a worst case scenario unplug the touchscreen completely and then reset the Driver before reconnecting the touchscreen. If excessive movement has occurred between the display and the touchscreen, the mounting construction should be assessed for abnormalities and corrected. The system should then be re-calibrated using the Calibration function on the Calibration page. If there still appears to be an issue the Stop Driver button should be selected on the Connection Page of the Touchscreen Control Panel. This will stop the touchscreen Driver software. The touchscreen Driver software should then be re-started by selecting the Start Driver button. This will re-start the touchscreen Driver and re-initialise the software and touchscreen.
The touchscreen is not operational after re-booting the computer	<ul style="list-style-type: none"> During the Driver software installation, a shortcut link to the ZYTOUCH_Driver.exe is automatically placed into the Windows operating system Startup folder. This ensures that the touchscreen Driver is enabled every time a re-boot occurs and the Windows environment is launched. Ensure that the link to the ZYTOUCH_Driver.exe is located in the Windows operating system Startup folder. If the link to the ZYTOUCH_Driver.exe is not loaded within the Windows Startup folder, ensure that a link to the ZYTOUCH_Driver.exe is placed within this folder.
The mouse pointer has an offset relative to an applied touch even after Calibration	<ul style="list-style-type: none"> Ensure that during the Calibration routine the applied touch is directly applied and held in the centre of the three displayed targets. Try and perform the Calibration routine from a viewing angle and height that the touchscreen would be used in its final application. Ensure that the Edge Gain controls are not active.
There appears to be a delay in applying a touch and obtaining mouse pointer movement	<ul style="list-style-type: none"> If the host computer is running a processor hungry application, the priority level of the touchscreen driver maybe a lower priority relative to the other applications running. To improve/resolve this issue change the Driver Priority Level setting, within the Connection – Advanced page of the Touchscreen Control Panel, from Normal (default) to High. This will give the touchscreen Driver a great priority for processor servicing.

<p>An area of the touchscreen appears to have no mouse pointer movement</p>	<ul style="list-style-type: none"> • Select the Graph page within the Touchscreen Control Panel. Apply a touch to the surface of the touchscreen and move the applied touch from top to bottom and from left to right of the touchscreen. When carrying this out, ensure that each indicator on the Graph moves relative to the applied touch movement. If an indicator fails to move relative to the applied touch movement, then this indicates a faulty wire within the touchscreen. If a faulty wire is discovered contact your ZYTOUCH® Projected Capacitive touchscreen supplier.
<p>Excessive random mouse pointer movement is occurring after re-booting the computer</p>	<ul style="list-style-type: none"> • This effect is due to a random bug within the Microsoft Windows 2000 and Windows XP operating system. If this scenario occurs the Windows operating system has incorrectly detected the connected touchscreen and allocated an incorrect driver. The touchscreen is generally incorrectly detected as a Serial Mouse device or a Serial BallPoint device. To alleviate this problem, initially disconnect the touchscreen from the host computer to regain control of the mouse pointer. Locate the Control Panel folder within the Windows operating system. Within the Control Panel folder double click on the System icon. Select the Hardware tab, then select the Device Manager option. Locate and click on the Mice and other pointing devices icon. If a device appears in this section (i.e. a Serial Mouse) that is not physically connected to the host computer then this likely to be the incorrectly detected device that needs to be disabled. Using the mouse pointer right click on the unknown connected device icon and select the Disable option from the menu. Choose the Yes option to disable the selected device. The computer should now be re-booted. The next time the computer starts the incorrectly detected device will be disabled. Once the computer has been re-booted, re-connect the touchscreen to the host computer, re-configure the touchscreen and proceed as normal. <p>There is another solution to this problem which involves a small Windows Registry edit. Reference to this solution can be found on the Microsoft web page: http://support.microsoft.com/default.aspx?scid=kb;en-us:Q283063. This registry edit is automatically carried out in the installation setup wizard program and should not need to be implemented again. It is important that the connected touchscreen is connected to the same Serial Com Port as selected during the software installation. If this is not the case re-install the Driver software and ensure that the selected Serial Com Port is the same port that the touchscreen is connected to.</p>



6.0 ZYTOUCH® PROJECTED CAPACITIVE TOUCHSCREEN TECHNICAL SPECIFICATION (SERIAL)

ELECTRICAL

- Technology: Projected Capacitive.
- Connectivity: RS232, D9 serial connector, pin-out 2,5,4 & 7.
- Power: 5mA typically from RS232 port DTR & RTS lines.
- Data Signal: TTL output logic; logic 0 (0-0.8V), logic 1 (2.4-5V)

PERFORMANCE CRITERIA

- Positional Accuracy <1.5% of reported position in recommended viewing area.
- Response Time: Direct Touch 20-40mS, Through Touch ~60mS.
- Calibration Drift Fixed embedded technology, non-contact with active sensor, zero moving parts.
- Abrasion Resistance: Glass, unaffected by surface scratching.
- Chemical Resistance: Glass, unaffected by cleaning solutions.

MECHANICAL

- Stylus Type: Finger, glove operable.
- Glass Type: Soda Lime.
- Sensor Thickness: ~7.8mm Direct Touch option.
~5.8mm Through Touch option.

OPTICAL

- Light Transmission ~88%.
- Surface Finishes: Plain or anti-glare etch.
Other finishes available upon request.

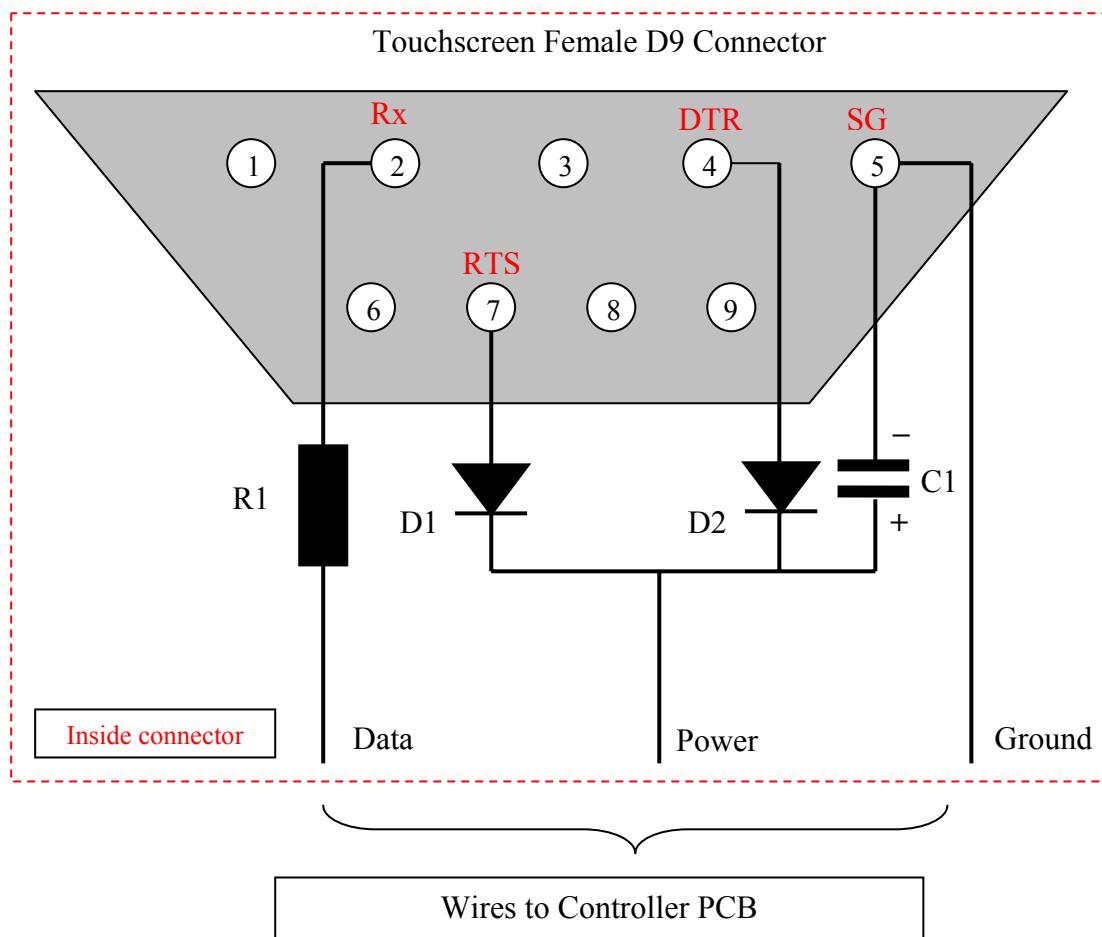
ENVIRONMENTAL AND SAFTEY

- EMC: CE, FCC-A (when fully integrated into final product)
- Safety: Laminated glass assembly complies with EN60950, UL60950, UL544.
- Vibration/Shock: In accordance with UL291 when installed in a suitable correct bezel.
- NEMA: Sealable to NEMA 12, NEMA 4.
- Operating: (-35°C to +65°C).
- Storage: (-40°C to +70°C).
- Humidity: 0 to 90% RH @ 40°C, unaffected by condensation.

- Water: Resistant to water droplets on the surface
- Weather: Resistant to snow, ice, rain, sleet, hail, wind, etc.



7.0 APPENDIX A: SERIAL D9 CONNECTOR WIRING DIAGRAM



Key

Pin 2	Rx	Receive Data
Pin 4	DTR	Data Terminal Ready
Pin 5	SG	Signal Ground/Common
Pin 7	RTS	Request to Send

Components

D1	-	Diode, small signal, Schottky, BAT85 (Philips Semiconductors – Part. No. BAT85A52R)
D2	-	Diode, small signal, Schottky, BAT85 (Philips Semiconductors – Part. No. BAT85A52R)
C1	-	47µF, 16V, Microminiature Electrolytic Capacitor
R1	-	1KΩ Resistor (0.25W Metal Film Resistor)